

Maternal Health Research Group

Strategic Plan 2025-2030



UCD School of Nursing, Midwifery and
Health Systems
Scoil an Altranais, an Chnáimhseachais
agus na gCóras Sláinte UCD

[Insert Group logo when available]

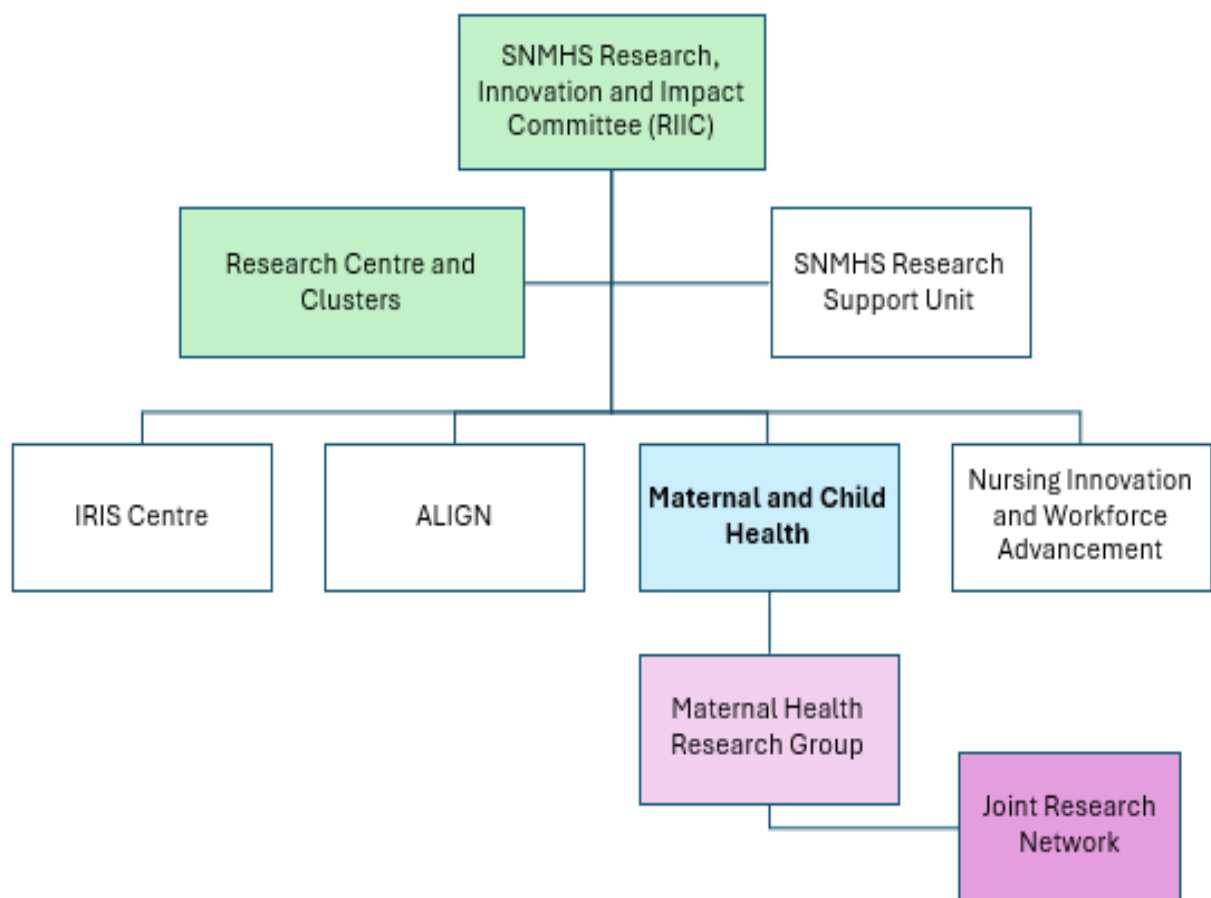
School of Nursing, Midwifery and Health Systems

University College Dublin

SNMHS Research Organogram

Maternal Health, inclusive of paternal/partner and neonatal health up to 12 months postpartum, is a prioritised thematic area within the Maternal and Child Health Research Cluster:

<https://www.ucd.ie/nmhs/research/researchclusters/maternalandchildhealthresearchcluster/>



UCD synergistic centres/groups

- UCD Perinatal Research Centre
- Women and Children's Health (School of Medicine)
- Academic Health Science System (AHSS)
- NovaUCD
- ONE-Health Centre

Membership

Membership of the Group is open to all with an interest in maternal health research.

Language

In this Strategic Plan, we use the term 'women', while acknowledging that not all women identify with the sex observed at birth. The Maternal Health Research Group is committed to research

that is inclusive and sensitive to the needs of all those who are pregnant or in the postpartum period, irrespective of gender identity.

Vision

The Maternal Health Research Group will be renowned for achieving excellence in transformative, sustainable midwifery and maternity care research that will make a positive difference to the lives and health of women and their families in pregnancy, during labour and childbirth and postpartum (up to 12 months). We will prioritise research that will have local, national and global significance and which promotes collaboration by involving women and their partners, maternity care providers in our partner maternity hospitals, national and international colleagues, and enterprise.

Values

- Positive Group culture: being able to share, challenge and discuss ideas in a respectful, honest, and supportive environment
- Partnership and co-creation: service users/PPI contributors are active partners in our research
- Fostering engagement: collaborative/team science approach that welcomes research students, early career researchers, and others
- Cultural intelligence: awareness, respect and value for individual diversity in the Group

Areas of current research focus

The Maternal Health Research Group has expertise in research that spans a wide range of topics and research methodologies. These are:

- Service provision, development and evaluation research (in collaboration with the Joint Research Network)
- Digital Health
- Evidence translation (maternity care policy implementation and evaluation)
- Evidence syntheses in maternity care
- Global Health/One-Health research (applied to maternal and newborn health)
- Research that spans the perinatal continuum

- Normal pregnancy and childbirth
- Complex care and critical illness
- Lactation and infant feeding

Aim

The aim of the Maternal Health Research Group is to conduct scientifically and ethically sound research that generates evidence for optimal midwifery and maternity care practices, improved maternal, newborn and family health outcomes, and which contributes to advances in maternity service and policy developments.

Strategic Goals

The Maternal Health Research Group has four Strategic Goals. These are to:

1. Generate Evidence
2. Translate and Disseminate Evidence
3. Collaborate
4. Build Capacity

Table 1: Strategic Goals with planned actions, resources, and outputs

Goal	Actions	Outputs
Generate Evidence	<ul style="list-style-type: none"> ● Conduct scientifically and ethically sound, high-quality research to generate evidence that will have impact for the health and wellbeing of women, babies and families 	<ul style="list-style-type: none"> ● Minimum 3 research projects in progress per year ● Host minimum of one group meeting per academic term to review and support developments and progress
	<ul style="list-style-type: none"> ● Identify emerging maternal and family-oriented research topics that require study 	<ul style="list-style-type: none"> ● Maintain a 'living' database of identified topics
	<ul style="list-style-type: none"> ● Explore opportunities for engagement with small-medium enterprise (SME) to support innovative research and evidence 	<ul style="list-style-type: none"> ● Engage with minimum 1 SME throughout the lifetime of the Strategic Plan

	generation for maternal health care, practice and policy	
	<ul style="list-style-type: none"> Secure funding from national, EU, and international organisations to support research activity 	<ul style="list-style-type: none"> Minimum 2 research grant applications submitted per year Minimum 1 secured per year
Translate & Disseminate Evidence	<ul style="list-style-type: none"> Assist in/Inform the development of evidence-based guidelines that will inform maternal health care practice 	<ul style="list-style-type: none"> Evidence generated through Group research informing minimum of 1 national or international guideline throughout the lifetime of the Strategic Plan
	<ul style="list-style-type: none"> Develop a research dissemination and communication plan 	<ul style="list-style-type: none"> Developed plan (by end of year 1)
	<ul style="list-style-type: none"> Effectively disseminate generated maternal health research evidence 	<ul style="list-style-type: none"> Minimum 5 journal publications per year (of which 50% are in Journals with IF min 2.0 and 50% Open Access) Minimum 3 conference or research proceeding presentations per year Projects made visible on the SNMHS Maternal Health Research webpage Compile an Annual Report of the Group's outcomes, outputs and impact and submit to the RIIC (Q1 each year)
	<ul style="list-style-type: none"> Build activity on social media platforms 	<ul style="list-style-type: none"> Work with the RSU and SNMHS marketing teams to ensure media dissemination Monitor online visits to the webpage (targeted 10% increase year on year)
Collaborate	<ul style="list-style-type: none"> Identify and map current national and international collaborations 	<ul style="list-style-type: none"> Established 'living' database

	<ul style="list-style-type: none"> Strengthen existing and expand local, national, and international maternal health research collaborations 	<ul style="list-style-type: none"> Minimum 2 new throughout the lifetime of Strategic Plan
	<ul style="list-style-type: none"> Strengthen existing and establish new multidisciplinary and intersectoral collaborations 	<ul style="list-style-type: none"> Minimum 2 new throughout the lifetime of Strategic Plan
Build Capacity	<ul style="list-style-type: none"> Support research students (MSc and PhD) and early career researchers to develop research knowledge and experience 	<ul style="list-style-type: none"> Minimum 3 PhD students in maternal health research in progress per year (maintain database of PhD studentships)
	<ul style="list-style-type: none"> Continue to support research with clinical colleagues through the Joint Research Network (JRN) 	<ul style="list-style-type: none"> Partner on 1-2 JRN projects per year
	<ul style="list-style-type: none"> Support early career researchers to achieve principal investigator (PI) status 	<ul style="list-style-type: none"> Research plans developed (targeted PI status within 3-5 years)
	<ul style="list-style-type: none"> Facilitate opportunities for research internships (e.g., summer student scholarships) 	<ul style="list-style-type: none"> Support minimum 1 summer student scholarship per year
	<ul style="list-style-type: none"> Ensure new maternal health researchers (PhD students, research assistants, post-doctoral researchers) to the SNMHS are invited as members to the Group. 	<ul style="list-style-type: none"> Monitor and update membership throughout the lifetime of Strategic Plan